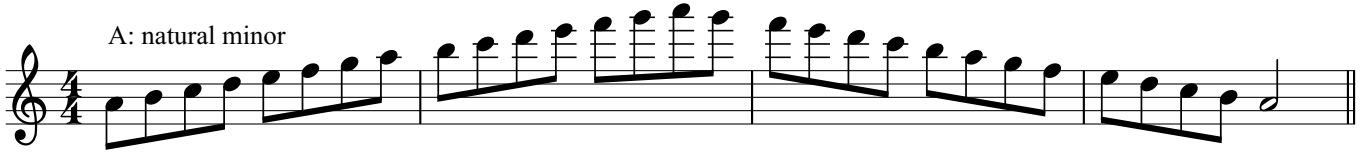


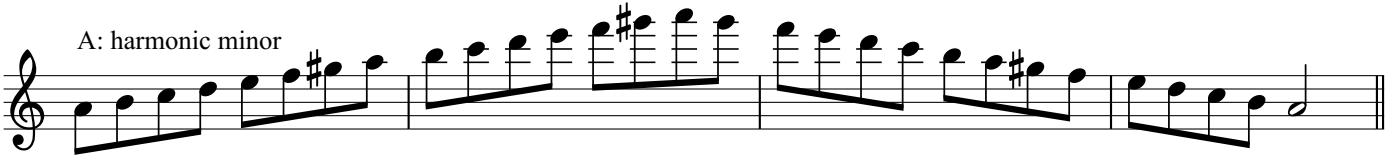
Minor Scales and Arpeggios

Compiled by Shelby Colgan

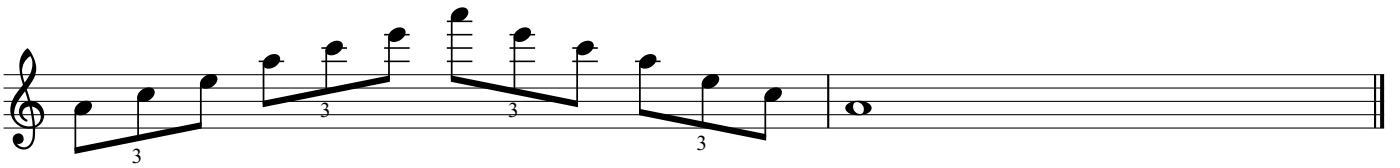
A: natural minor



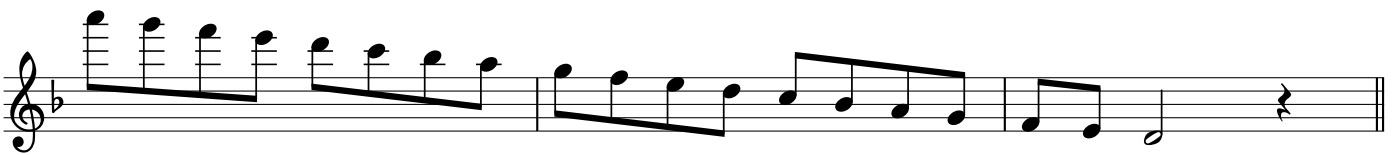
A: harmonic minor



A: melodic minor



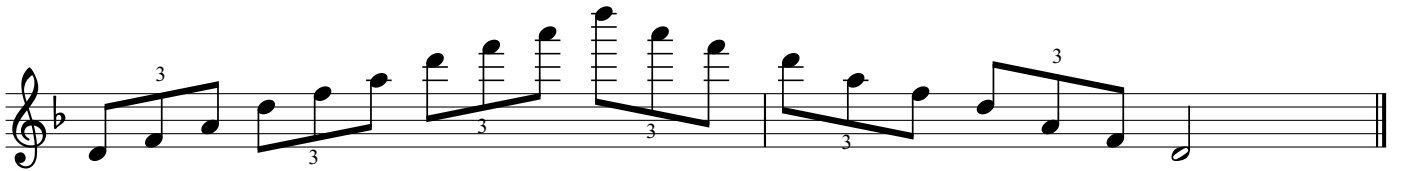
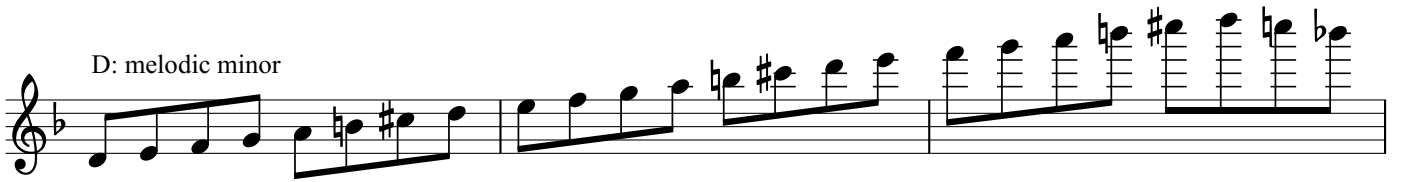
D: natural minor



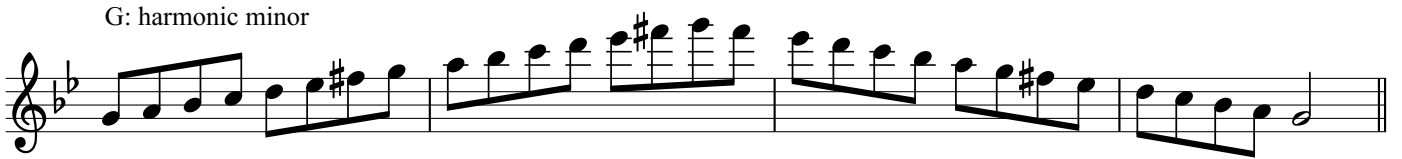
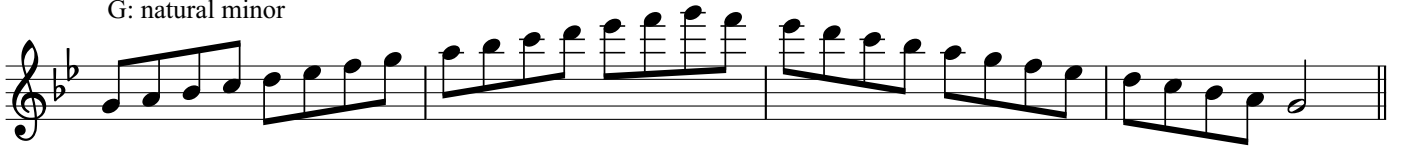
D: harmonic minor



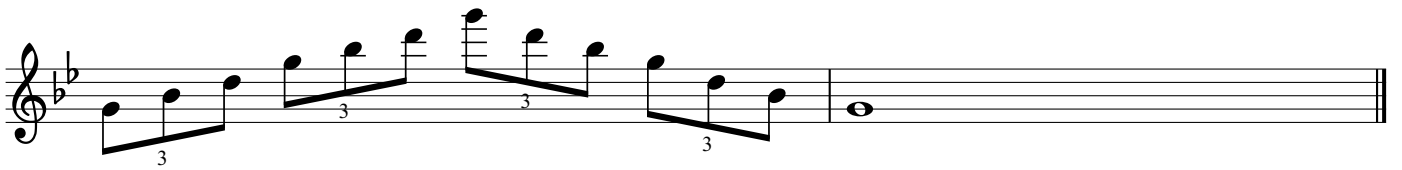
D: melodic minor



G: natural minor



G: melodic minor



C: natural minor



C: harmonic minor

Two staves of musical notation for the C harmonic minor scale. The first staff contains the first two measures, and the second staff contains the next two measures. The key signature has two flats (Bb and Eb).

C: melodic minor

Two staves of musical notation for the C melodic minor scale. The first staff contains the first two measures, and the second staff contains the next two measures. The key signature has two flats (Bb and Eb).

Third staff of musical notation for the C melodic minor scale, featuring triplet markings (the number 3) under the first and fourth measures.

F: natural minor

First staff of musical notation for the F natural minor scale. The key signature has three flats (Bb, Eb, and Ab).

F: harmonic minor

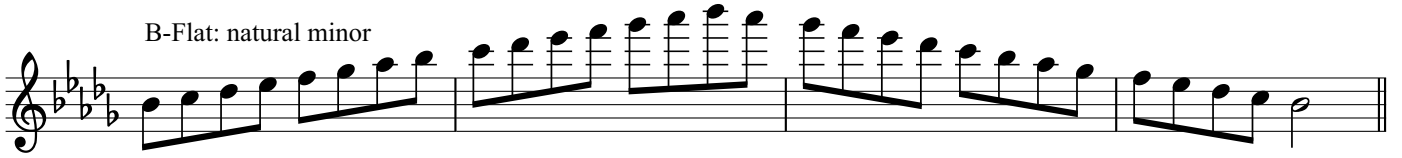
First staff of musical notation for the F harmonic minor scale. The key signature has three flats (Bb, Eb, and Ab).

F: melodic minor

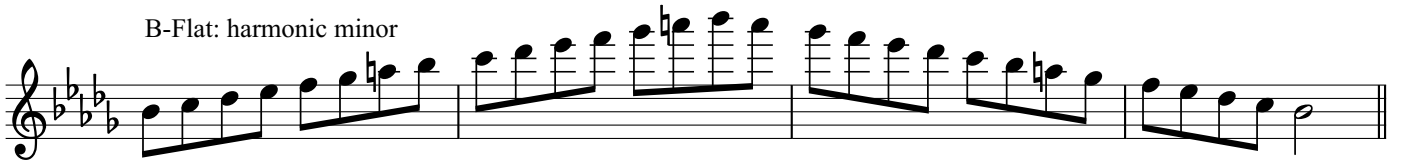
First staff of musical notation for the F melodic minor scale. The key signature has three flats (Bb, Eb, and Ab).

Second staff of musical notation for the F melodic minor scale, featuring triplet markings (the number 3) under the first, second, and third measures.

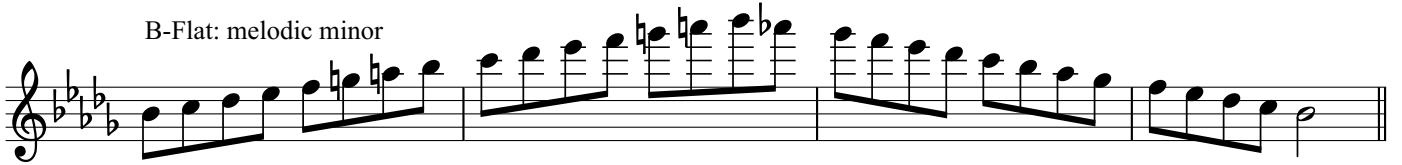
B-Flat: natural minor



B-Flat: harmonic minor



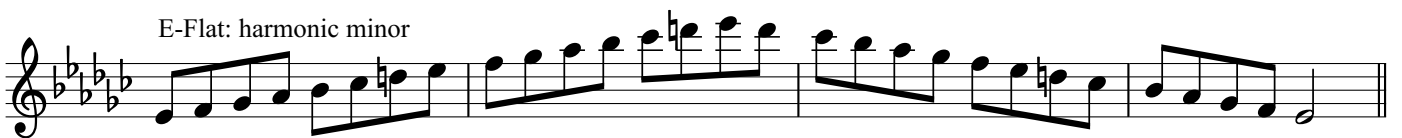
B-Flat: melodic minor



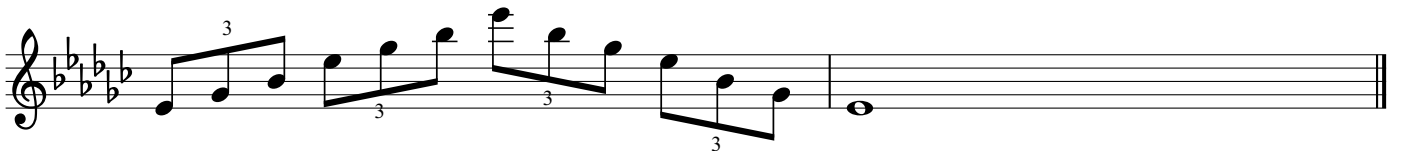
E-Flat: natural minor



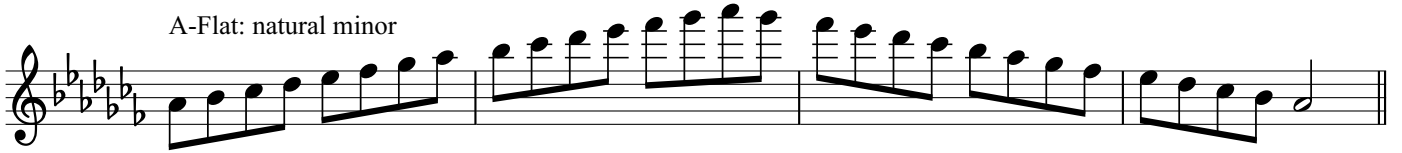
E-Flat: harmonic minor



E-Flat: melodic minor



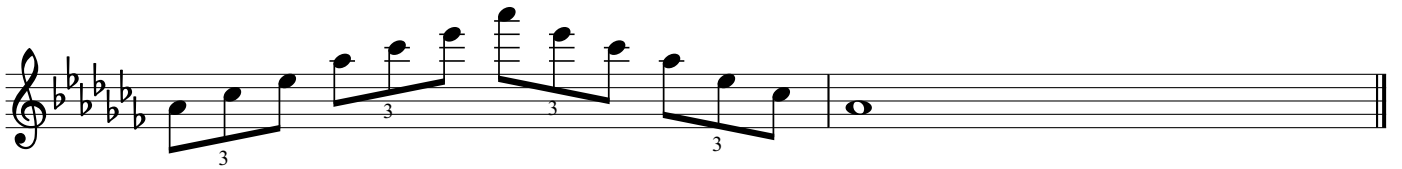
A-Flat: natural minor



A-Flat: harmonic minor



A-Flat: melodic minor



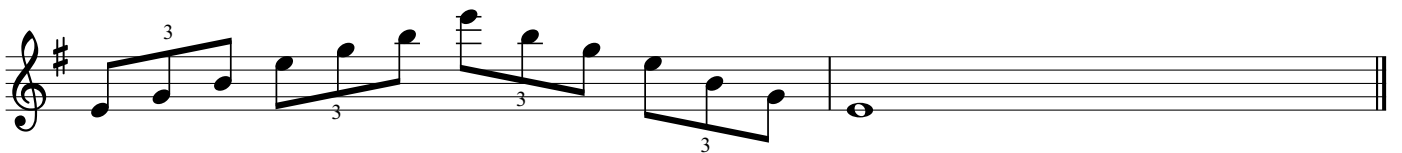
E: natural minor



E: harmonic minor



E: melodic minor



B: natural minor

Two staves of musical notation for the B: natural minor scale. The first staff shows the ascending scale: B2, C3, D3, E3, F#3, G3, A3, B3. The second staff shows the descending scale: B3, A3, G3, F#3, E3, D3, C3, B2. The key signature has two sharps (F# and C#).

B: harmonic minor

Two staves of musical notation for the B: harmonic minor scale. The first staff shows the ascending scale: B2, C3, D3, E3, F#3, G3, A3, B3. The second staff shows the descending scale: B3, A3, G3, F#3, E3, D3, C3, B2. The key signature has two sharps (F# and C#).

B: melodic minor

Two staves of musical notation for the B: melodic minor scale. The first staff shows the ascending scale: B2, C3, D3, E3, F#3, G3, A3, B3. The second staff shows the descending scale: B3, A3, G3, F#3, E3, D3, C3, B2. The key signature has two sharps (F# and C#).

Third staff of musical notation for the B: melodic minor scale, featuring triplet exercises. The first staff shows the ascending scale: B2, C3, D3, E3, F#3, G3, A3, B3. The second staff shows the descending scale: B3, A3, G3, F#3, E3, D3, C3, B2. The key signature has two sharps (F# and C#).

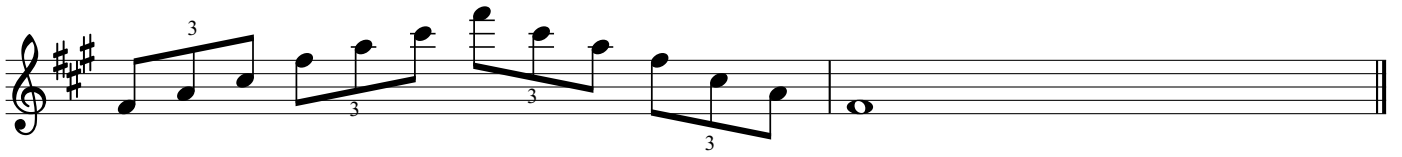
F-Sharp: natural minor

First staff of musical notation for the F-Sharp: natural minor scale. The ascending scale is: F#3, G3, A3, B3, C#4, D4, E4, F#4. The descending scale is: F#4, E4, D4, C#4, B3, A3, G3, F#3. The key signature has three sharps (F#, C#, G#).

F-Sharp: harmonic minor

First staff of musical notation for the F-Sharp: harmonic minor scale. The ascending scale is: F#3, G3, A3, B3, C#4, D4, E4, F#4. The descending scale is: F#4, E4, D4, C#4, B3, A3, G3, F#3. The key signature has three sharps (F#, C#, G#).

F-Sharp: melodic minor



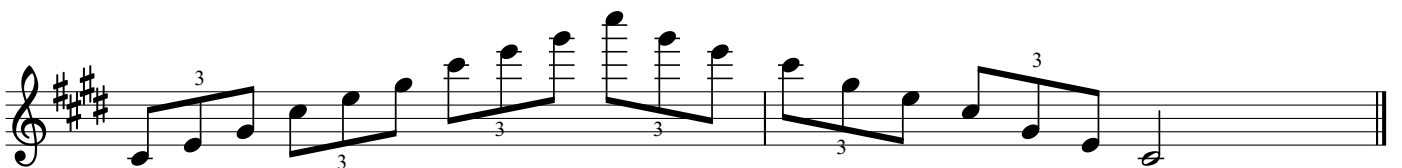
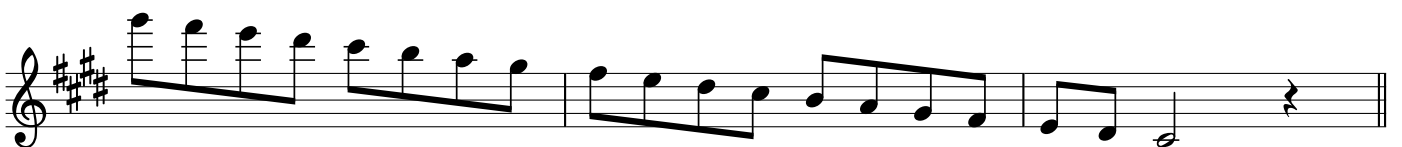
C-Sharp: natural minor



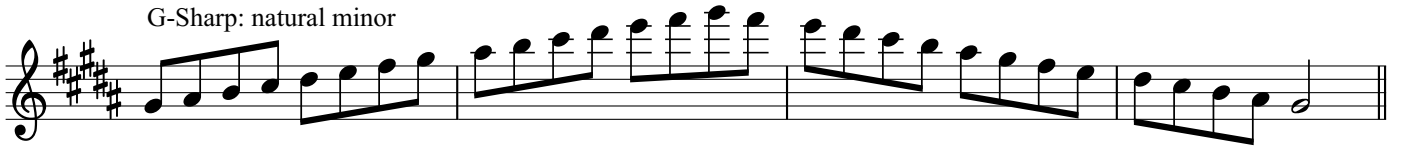
C-Sharp: harmonic minor



C-Sharp: melodic minor



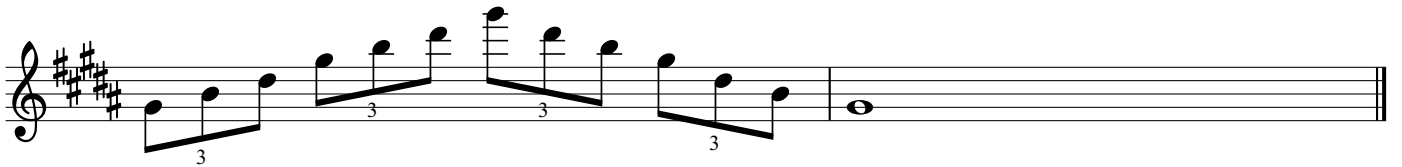
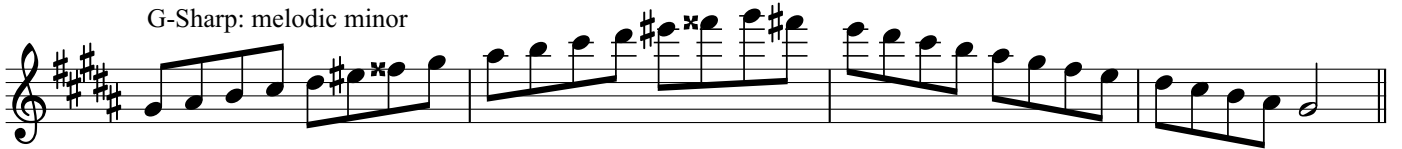
G-Sharp: natural minor



G-Sharp: harmonic minor



G-Sharp: melodic minor



D-Sharp: natural minor



D-Sharp: harmonic minor



D-Sharp: melodic minor

