

Major Scales and Arpeggios

Compiled by Shelby Colgan

C Major

Two staves of musical notation for the C Major scale and arpeggios. The first staff shows the ascending and descending scales in 4/4 time. The second staff shows the ascending and descending arpeggios, with triplets indicated by a '3' above the notes.

F Major

Two staves of musical notation for the F Major scale and arpeggios. The first staff shows the ascending and descending scales in 4/4 time. The second staff shows the ascending and descending arpeggios, with triplets indicated by a '3' above the notes.

B-Flat Major

Two staves of musical notation for the B-Flat Major scale and arpeggios. The first staff shows the ascending and descending scales in 4/4 time. The second staff shows the ascending and descending arpeggios, with triplets indicated by a '3' above the notes.

E-Flat Major

Two staves of musical notation for the E-Flat Major scale and arpeggios. The first staff shows the ascending and descending scales in 4/4 time. The second staff shows the ascending and descending arpeggios, with triplets indicated by a '3' above the notes.

A-Flat Major

Two staves of musical notation for the A-Flat Major scale. The first staff shows the ascending and descending scales. The second staff shows the ascending scale with triplet markings (3) under the notes.

D-Flat Major

Two staves of musical notation for the D-Flat Major scale. The first staff shows the ascending and descending scales. The second staff shows the ascending scale with triplet markings (3) under the notes.

G-Flat Major

Two staves of musical notation for the G-Flat Major scale. The first staff shows the ascending and descending scales. The second staff shows the ascending scale with triplet markings (3) under the notes.

C-Flat Major

Two staves of musical notation for the C-Flat Major scale. The first staff shows the ascending and descending scales. The second staff shows the ascending scale with triplet markings (3) under the notes.

G Major

The first line of musical notation for G Major, starting with a treble clef and a key signature of one sharp (F#). It contains a sequence of eighth notes: G4, A4, B4, C5, D5, E5, F#5, G5, F#5, E5, D5, C5, B4, A4, G4.

The second line of musical notation for G Major, continuing the scale with eighth notes: G4, A4, B4, C5, D5, E5, F#5, G5, F#5, E5, D5, C5, B4, A4, G4. It includes three triplet markings (the number '3' below the notes) over the first, second, and third groups of notes.

D Major

The first line of musical notation for D Major, starting with a treble clef and a key signature of two sharps (F# and C#). It contains a sequence of eighth notes: D4, E4, F#4, G4, A4, B4, C#5, D5, C#5, B4, A4, G4, F#4, E4, D4.

The second line of musical notation for D Major, continuing the scale with eighth notes: D4, E4, F#4, G4, A4, B4, C#5, D5, C#5, B4, A4, G4, F#4, E4, D4. It includes three triplet markings (the number '3' below the notes) over the first, second, and third groups of notes.

The third line of musical notation for D Major, continuing the scale with eighth notes: D4, E4, F#4, G4, A4, B4, C#5, D5, C#5, B4, A4, G4, F#4, E4, D4. It includes three triplet markings (the number '3' below the notes) over the first, second, and third groups of notes.

A Major

The first line of musical notation for A Major, starting with a treble clef and a key signature of three sharps (F#, C#, G#). It contains a sequence of eighth notes: A3, B3, C#4, D4, E4, F#4, G#4, A4, G#4, F#4, E4, D4, C#4, B3, A3.

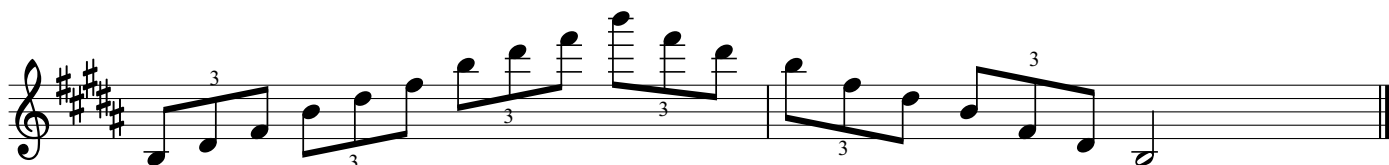
The second line of musical notation for A Major, continuing the scale with eighth notes: A3, B3, C#4, D4, E4, F#4, G#4, A4, G#4, F#4, E4, D4, C#4, B3, A3. It includes three triplet markings (the number '3' below the notes) over the first, second, and third groups of notes.

E Major

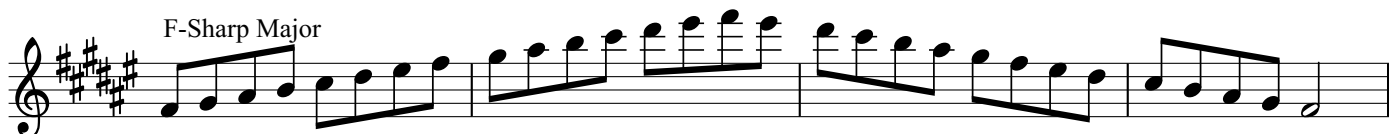
The first line of musical notation for E Major, starting with a treble clef and a key signature of four sharps (F#, C#, G#, D#). It contains a sequence of eighth notes: E3, F#3, G#3, A3, B3, C#4, D#4, E4, D#4, C#4, B3, A3, G#3, F#3, E3.

The second line of musical notation for E Major, continuing the scale with eighth notes: E3, F#3, G#3, A3, B3, C#4, D#4, E4, D#4, C#4, B3, A3, G#3, F#3, E3. It includes three triplet markings (the number '3' below the notes) over the first, second, and third groups of notes.

B Major



F-Sharp Major



C-Sharp Major

