

Major Scales and Arpeggios

Compiled by Shelby Colgan

C Major

The C Major scale is shown in 4/4 time on a treble clef staff. The scale is written in two lines: the first line shows the scale ascending and then descending, and the second line shows the scale ascending and then descending with triplet markings (3) above and below the notes.

F Major

The F Major scale is shown in 4/4 time on a treble clef staff with one flat (B-flat). The scale is written in two lines: the first line shows the scale ascending and then descending, and the second line shows the scale ascending and then descending with triplet markings (3) above and below the notes.

B-Flat Major

The B-Flat Major scale is shown in 4/4 time on a treble clef staff with two flats (B-flat and E-flat). The scale is written in two lines: the first line shows the scale ascending and then descending, and the second line shows the scale ascending and then descending with triplet markings (3) above and below the notes.

E-Flat Major

The E-Flat Major scale is shown in 4/4 time on a treble clef staff with three flats (B-flat, E-flat, and A-flat). The scale is written in two lines: the first line shows the scale ascending and then descending, and the second line shows the scale ascending and then descending with triplet markings (3) above and below the notes.

A-Flat Major

Musical notation for A-Flat Major, consisting of two staves. The first staff contains a continuous sequence of eighth notes. The second staff contains a sequence of eighth notes with triplet markings (the number '3' below the notes) and ends with a whole note.

D-Flat Major

Musical notation for D-Flat Major, consisting of two staves. The first staff contains a continuous sequence of eighth notes. The second staff contains a sequence of eighth notes with triplet markings (the number '3' below the notes) and ends with a whole note.

G-Flat Major

Musical notation for G-Flat Major, consisting of two staves. The first staff contains a continuous sequence of eighth notes. The second staff contains a sequence of eighth notes with triplet markings (the number '3' below the notes) and ends with a whole note.

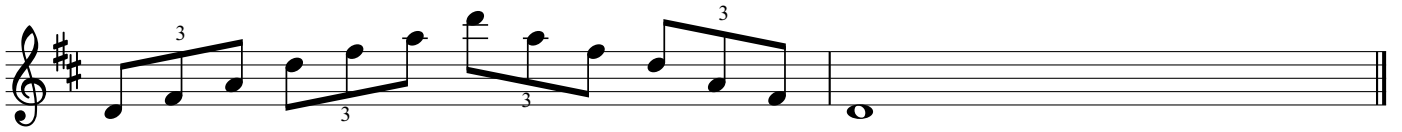
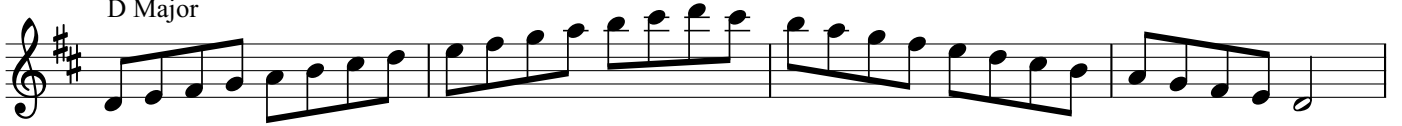
C-Flat Major

Musical notation for C-Flat Major, consisting of two staves. The first staff contains a continuous sequence of eighth notes. The second staff contains a sequence of eighth notes with triplet markings (the number '3' below the notes) and ends with a whole note.

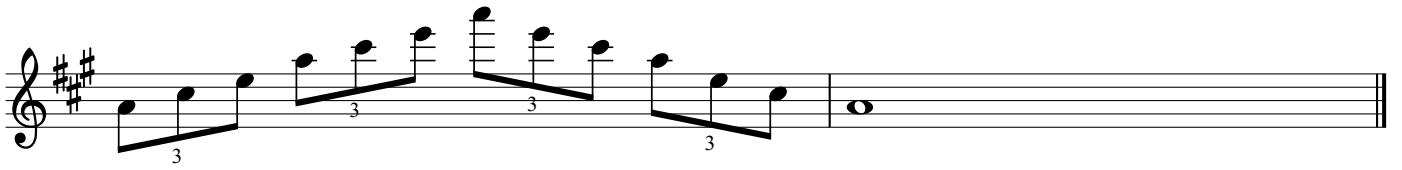
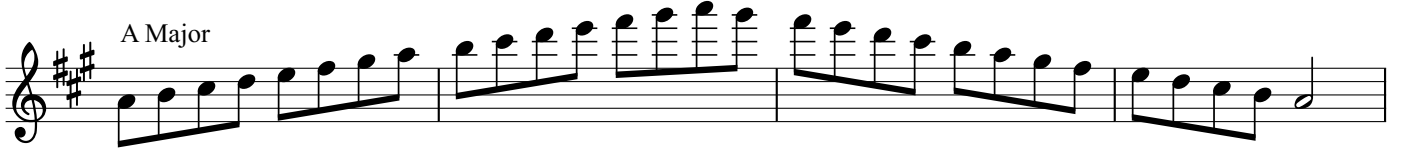
G Major

Musical notation for G Major, consisting of two staves. The first staff contains a continuous sequence of eighth notes. The second staff contains a sequence of eighth notes with triplet markings (the number '3' below the notes) and ends with a whole note.

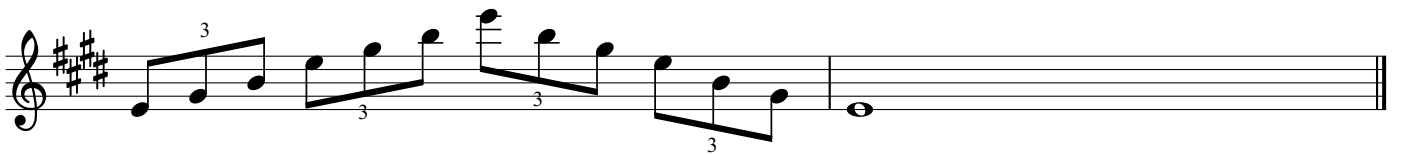
D Major



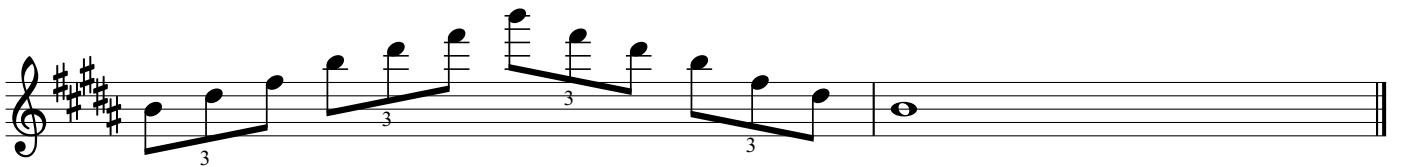
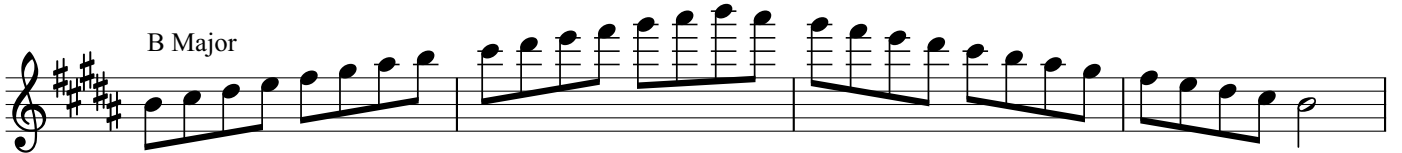
A Major



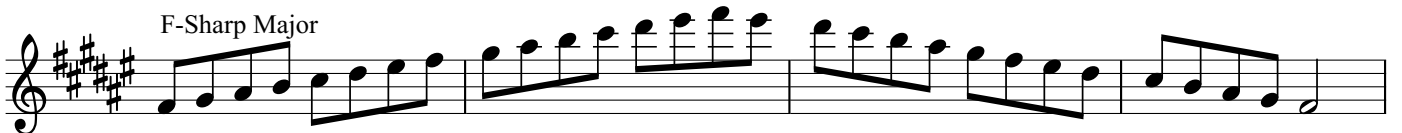
E Major



B Major



F-Sharp Major



C-Sharp Major

